

DPL *Pulse in action*

PLANET

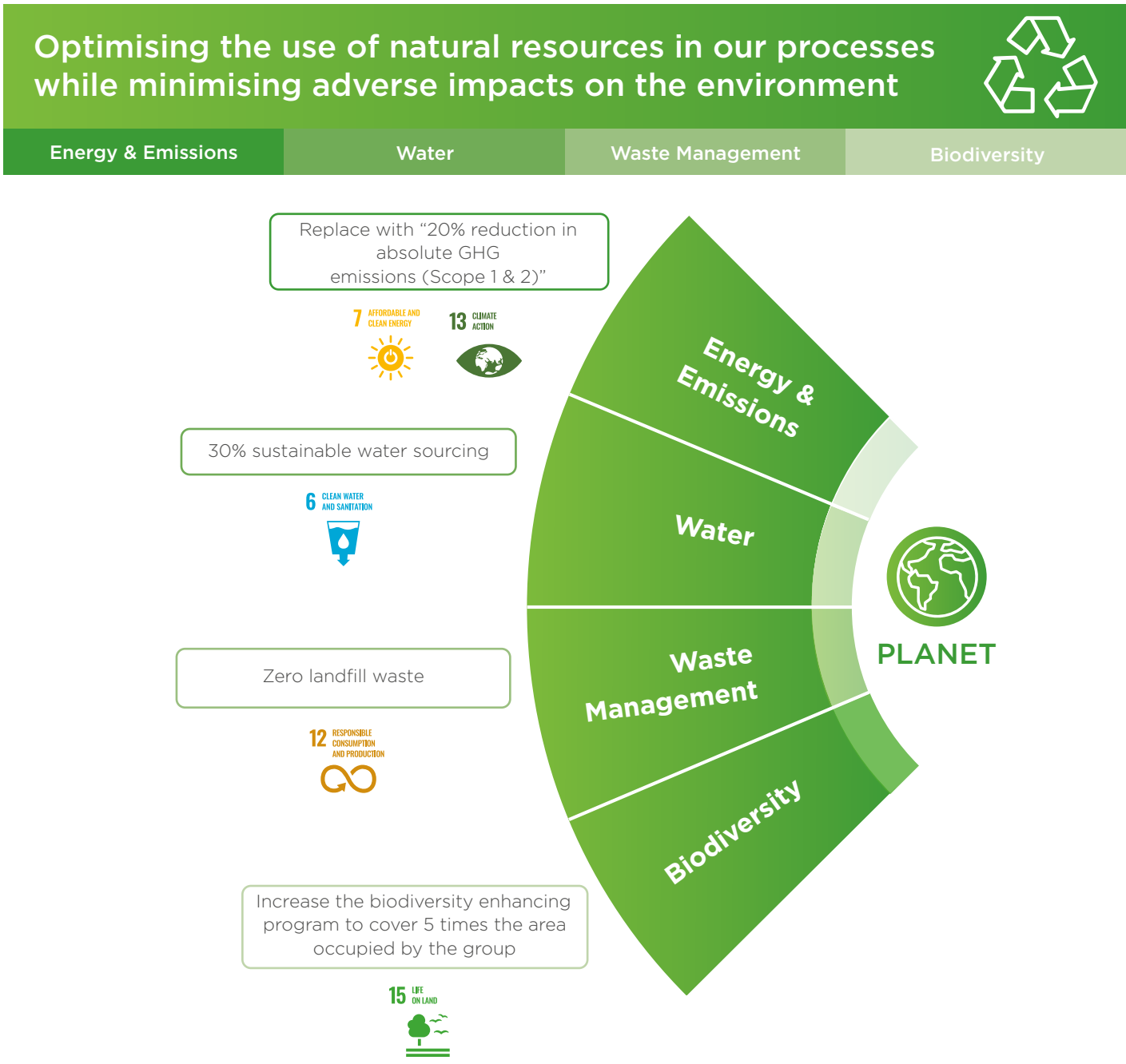
We are firm in our belief that the need for business growth can be balanced with the active protection of our environment, as preserving nature and the service it provides are integral to the survival of economies, businesses and communities.



DPL Pulse in Action



PLANET

As a business which relies significantly on natural resources, our organisation is inevitably intertwined with the natural environment, which in turn presents opportunities to deliver positive impacts and minimise our environmental footprint through innovation and allocation of necessary resources. This section sets out DPL's Environmental strategies, targets and plans for achieving the same.



Energy and Emissions



Targets, actions and KPIs

Policy	Aspiration	Target for 2030	Actions	Baseline Performance (2020/21)	Annual KPI
Energy and Emissions Management Policy 	Increase reliance on sustainable and renewable energy sources	Renewable energy 95%	<ul style="list-style-type: none"> Minimize fossil fuel usage in generating thermal energy Install solar PV systems in manufacturing locations, including energy storage applications 	93%	1% increase in renewable energy reliance (Increase by 18,000 GJ)
		100% sustainable biomass	<ul style="list-style-type: none"> Develop a biomass supply chain by collaborating with industries such as timber Partner with agricultural industries to manufacture briquettes with high calorific value Pursue opportunities in the cultivation of fuel wood and research in the use of invasive plants as fuel wood 	51%	Increase by 5%
	Phase out absolute carbon footprint (Aligning with net-zero by 2050 journey)	20% reduction in absolute GHG emissions (Scope 1 & 2)	<ul style="list-style-type: none"> Manufacturing locations to be given carbon reduction targets Obtain third party certification for capturing all direct and indirect GHG emissions across the group by 2023/24 Commit to science-based targets by 2025/26 	37,000 MT CO _{2e}	2% reduction in absolute GHG emissions (Scope 1 & 2)
		8% reduction in absolute GHG emissions (Scope 3)		-	1% reduction in absolute GHG emissions (Scope 3)
Reduce energy consumption and intensity	25% energy intensity reduction	<ul style="list-style-type: none"> Focus on high volume and energy efficient plants at design stage Work for process innovations Conduct energy reduction projects in process level 	7 MJ/pair	3.5% energy intensity reduction	
Relevant SDG and Target	Target 7.2: By 2030, increase substantially the share of renewable energy in the global energy mix			 7 AFFORDABLE AND CLEAN ENERGY	

DPL Pulse in Action



Water

Targets, actions and KPIs

Policy	Aspiration	Target for 2030	Actions	Baseline Performance (2020/21)	Annual KPI
Water Management Policy 	Application of sustainable water sources	30% sustainable water sourcing (rain water / water recoveries / recycled water use)	<ul style="list-style-type: none"> Construction of efficient effluent treatment plants in each manufacturing location Improve infrastructure to widen rain water harvesting 	15%	1.5% increase in sustainable water sourcing
		55% re-use of treated waste water	<ul style="list-style-type: none"> Improve efficiency of existing waste water treatment plants through adopting latest technology 	15%	5% increase in waste water recycling
	Reduce water consumption and intensity	30% water intensity reduction	<ul style="list-style-type: none"> Improve the quality of treated water and increase the reuse water quantity 	7 liters/pair	4% water intensity reduction
Relevant SDG and Target	<p><i>Target 6.4: By 2030, substantially increase water-use efficiency across all sectors and ensure sustainable withdrawals and supply of freshwater to address water scarcity and substantially reduce the number of people suffering from water scarcity</i></p> <p><i>Target 6.3: By 2030, improve water quality by reducing pollution, eliminating dumping and minimizing release of hazardous chemicals and materials, halving the proportion of untreated wastewater and substantially increasing recycling and safe reuse globally</i></p>				

Waste Management

Targets, actions and KPIs

Policy	Aspiration	Target for 2030	Actions	Baseline Performance (2020/21)	Annual KPI
Material and Waste Management Policy 	Value addition across all waste generations	25% reduction of waste intensity	<ul style="list-style-type: none"> Process innovation to reduce waste generation Implement cleaner production initiatives 	0.124 tonne/LKR Mn	3% reduction in waste intensity
		Zero landfill	<ul style="list-style-type: none"> Evaluate all types of existing landfill waste and identify alternative sustainable methods to reduce, reuse and recycle each waste type 	180 tonne	25 tonne reduction in landfill
Relevant SDG and Target	Target 12.4: By 2030, substantially reduce waste generation through prevention, reduction, recycling and reuse 				

DPL Pulse in Action

Biodiversity

Targets, actions and KPIs

Policy	Aspiration	Target for 2030	Actions	Baseline Performance (2020/21)	Annual KPI
Biodiversity conservation policy 	Biodiversity conservation and preservation relating to our business operations	Increase the biodiversity enhancing program to cover 5 times the area occupied by the group	<ul style="list-style-type: none"> Establishing biodiversity conservation parks Tree planting initiatives Take initiative to develop a large scale biodiversity project 	-	Develop an area of 4 acres internally Continue to work with “Kirulu” afforestation project
<i>Relevant SDG and Target</i>	<i>Target 15.2: By 2020, promote the implementation of sustainable management of all types of forests, halt deforestation, restore degraded forests and substantially increase afforestation and reforestation globally</i>				

